



Mark 3 - Draft Floor Plan – Community Hall Upgrade - 2026

The proposed upgrade of the existing community hall aims to improve accessibility, comfort, functionality, storage and capacity to the broad range of community activities. Rather than embark on a full-scale extension, the goal is to apply an upgrade to the current usable spaces we have and add functionality within achievable budget constraints.

ALIGNMENT WITH THREE VILLAGES STRATEGIC PLAN

The project aligns directly with the Community Strategic Plan - its Values of character, innovation and connectedness (p6); its Theme 4.3 of Recreation and Community Facilities - with the objective of 'upgrading the Kioloa Community Hall via an extension to accommodate a broader range of events for community engagement and to enhance book fair and other storage, presentations and fundraising for the community (p36)'.

PROJECT VISION

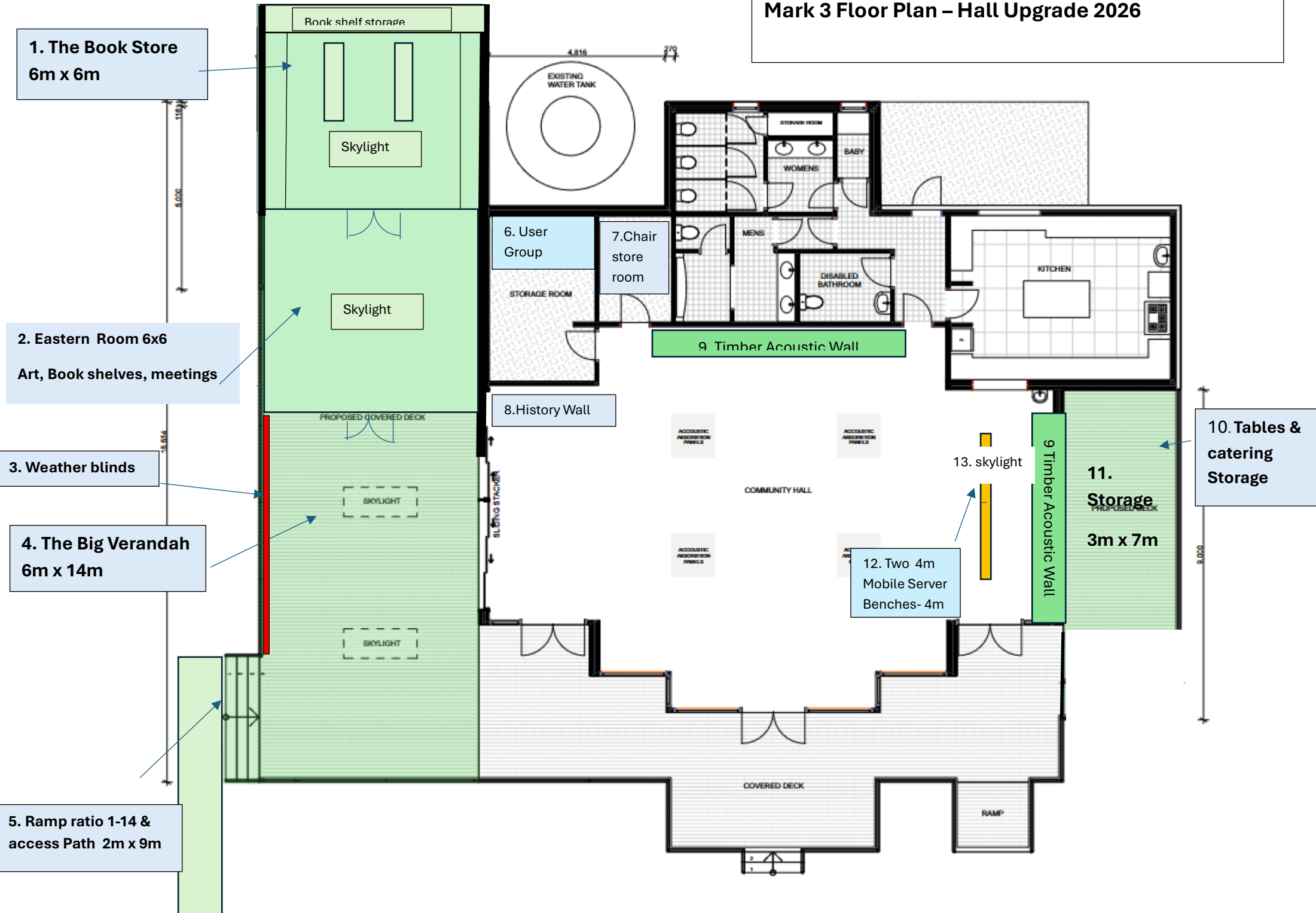
Create a welcoming, flexible and sustainable community hub that supports diverse cultural, fitness, social and recreational activities; extends and supports a range of usage and facilities; provides future revenue generation for community purposes, and strengthens ongoing community connections and engagement.

FUNDING

\$100k has been pledged from Community Sport and Recreation Club Inc. Funds have already been raised through markets, projects, book sales, the Kioloa Fair etc. and the pledge has been formally endorsed. (See S&R minute. 12th Feb 2026.)

\$300k worth of Grants or gifts will need to be sought from State and Federal Governments and Philanthropic groups such as Veolia Community Grant Fund, the NSW CRIF (Crown Reserve Infrastructure Fund), the NSW Building Community Partnerships Grants and businesses with a local interest.

Mark 3 Floor Plan – Hall Upgrade 2026



INTERNAL- STAGE 1

- Acoustic Sculptural Batts & Wall Cladding
- Air Con/ heating/dehumidifier
- Chair Storage Room & Chair Lifter
- User Group Storage Room
- Stacker Glass Doors
- History Wall
- User group storage
- Entry Sensor lighting
- Podium (Risers)
- Sound & Microphones
- IT / Wifi / bluetooth and projector
- Optional
 - Painting ceiling
 - Mobile Server bench

WESTERN Side- STAGE 2

- Storage Room
- Table Storage unit Vertical stack
- Lighting
- Skylight
- Wall Cladding and Hidden doors

EASTERN Side- STAGE 3

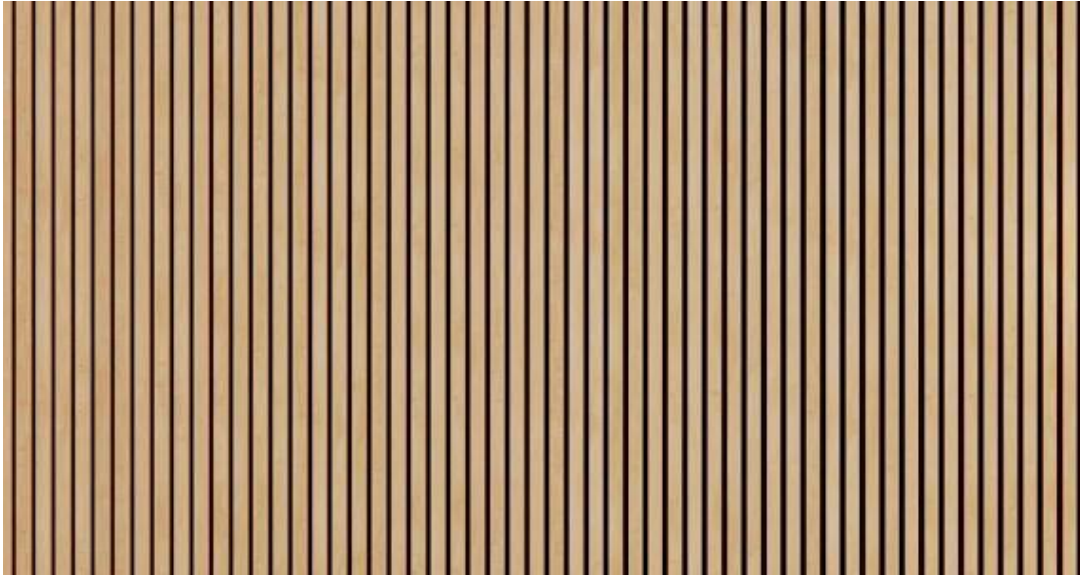
- The Book Storage
- Art & Meeting Room
- Big Verandah
- Roller weather blinds
- Ramp
- Access Path
- Lighting
- Skylights
- Painting to match

Greater Storage Capacity

Flexibility of Use

Increased Functionality

VISUALISATIONS

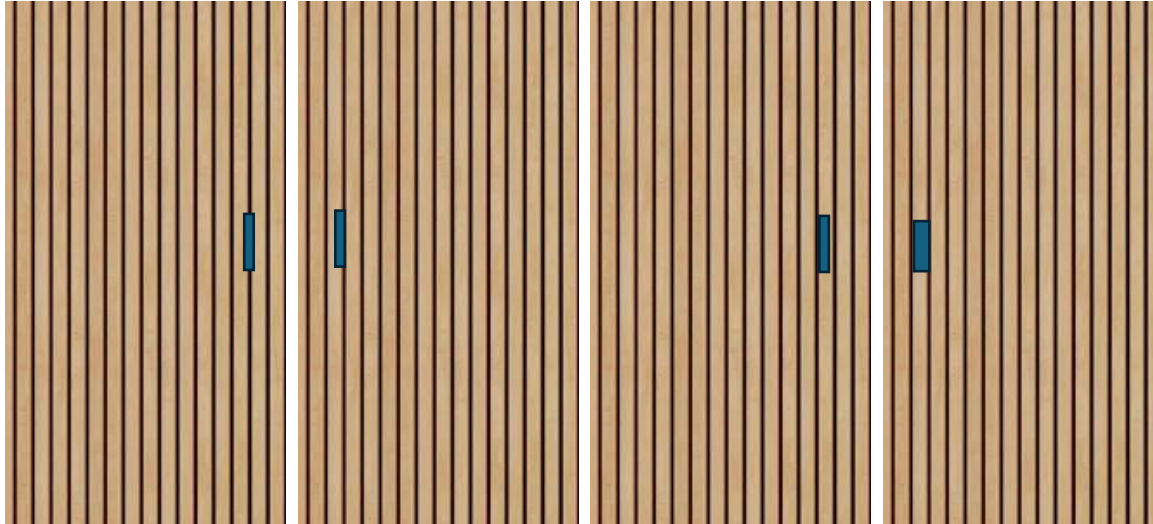


10. Walnut - Acoustic Wall Cladding Panel

or



10. Oak- Acoustic Wall cladding Panel



11. Western Storage Room - Timber Clad Wall doors



Western Wall with acoustic cladding and secret doors.



1. The Hall Interior Main Wall
2. Oak Timber Acoustic Cladding
3. Smart Television in the centre of the wall along with with historic images on canvas

Some items considered in the project to further enhance acoustics, functionality and storage needs for the hall.



Chair Lifter

Acoustic Batts

Mobile Modular Mini Stage Risers



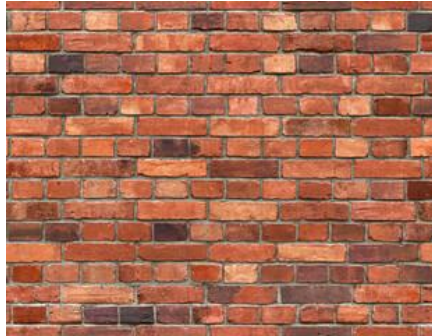
Foldable shelf unit



4 tier shelf systems



Examples of historic images to be placed on canvas 1m x 1m for the Hall.



At this stage of the project, it is suggested to build a storage room 3m x 7m with a brick wall on the **western side of the hall** as protection from embers from the BAL 40 flame zone rated forest, which is less than 10m from the building.

The storage room could contain community catering elements such as a 16-table rack, the BBQ, gazebo, coffee machine and wall racks for kitchen and hall needs.

What are the total costs of the build estimated at? Between \$300k - \$400k

- Bawley Point Kioloa Sport and Recreation Club has \$100K for the project already.
- Grants will be sought for the remaining \$200K - \$300K which occurs when they are offered. They take time to be selected and are not made available for several months.

Why Stage the Project?

- Stage 1, the internal upgrade will not interrupt Community Use of the Hall at all.
- Stage 2, the western side (looking onto the forest), is not a large intrusive build. So it could occur next.
- Stage 3 is the biggest part and may take 8 weeks.

When might Stage 3, the larger Build, start?

- As far away as June 2027

Accommodation for the User Groups during the build?

- User Groups will work together with the Community Hall Management team and the S&R Club INC to resolve a place for their needs during the major build.

What is the building process?

- Our local Bawley Point and Kioloa tradies, builders, electricians and Plumbers will be invited through the Consultation period, April 2026, to become familiar with the project and the stages of the build.
- They will be invited to submit an expression of interest to be involved in the project.
- After Council has approved the project as a worthy Community Led Project at the end of July 2026 and as we commence the formal DA process in August, tenders will be sought, selected and offered pending the success of the DA and of funding received via grants.
- Council takes 6 weeks to assess Development Applications.

Consultation with the Community

To be conducted through March April 2026

BPKT Community Association Inc

Sport & Rec Members

The Hall Management Committee

Local Leaders Bawley Point, Kioloa, Termeil

Saltwood Cafe

Yin Yoga

Nia Dance

Bowls

Budo Kempo Karate

Senior Moves

Pilates

Friendship Group

Waminda Group

War Memorial Committee

Mary's Murramarang Markets

Kioloa Fire Brigade

Bawley Fire Brigade

Marine Rescue

Local Tradies

Shoalhaven City Council Mayor and Senior Staff

Other Community Members 'Have Your Say Day' – Sunday 26th 10am – 1pm

The Project Team

The Bawley Point Kioloa Sport and Recreation Club Inc

Allan Baptist OAM JP

Brett Granter

John Marlay

Working in partnership with the BPKT Community Association Inc

Liaison Officer Lindsay Cane

and

The Hall Management Committee